



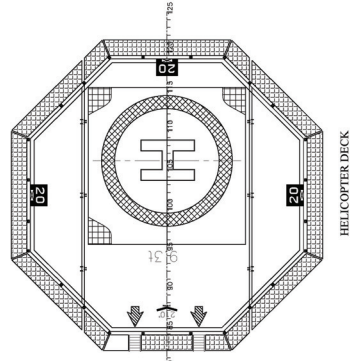
IGOPL
OFFSHORE



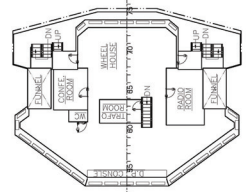
DP DSV Wilchief 1

1
2
3
4
5
6
7
8
9
10
11
12
13
14
15
16

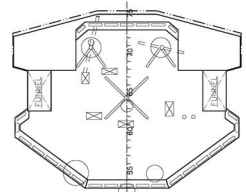
THIS DRAWING WAS PREPARED BY THE ARCHITECT IN THE COURSE OF HIS PROFESSIONAL SERVICES AND IS TO BE USED ONLY FOR THE PROJECT AND SITE SPECIFICALLY IDENTIFIED HEREIN. IT IS NOT TO BE REPRODUCED OR COPIED IN WHOLE OR IN PART OR DISCLOSED TO ANY THIRD PARTY FOR ANY PURPOSE WHATSOEVER WITHOUT PRIOR WRITTEN CONSENT.



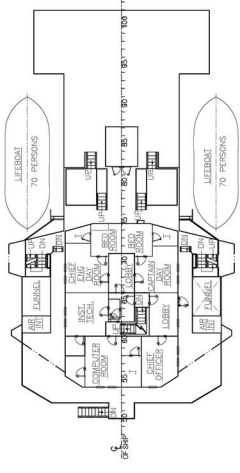
HELICOPTER DECK



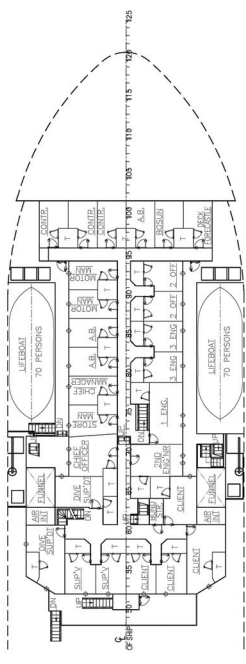
NAV BRIDGE DECK



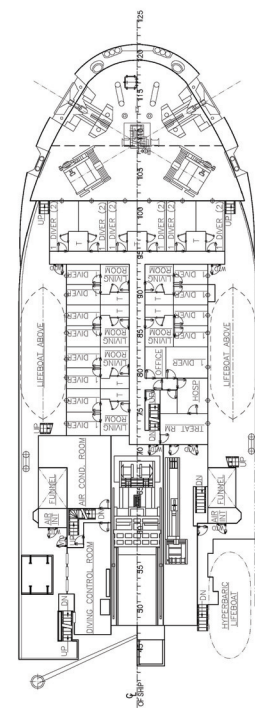
WHEELHOUSE TOP



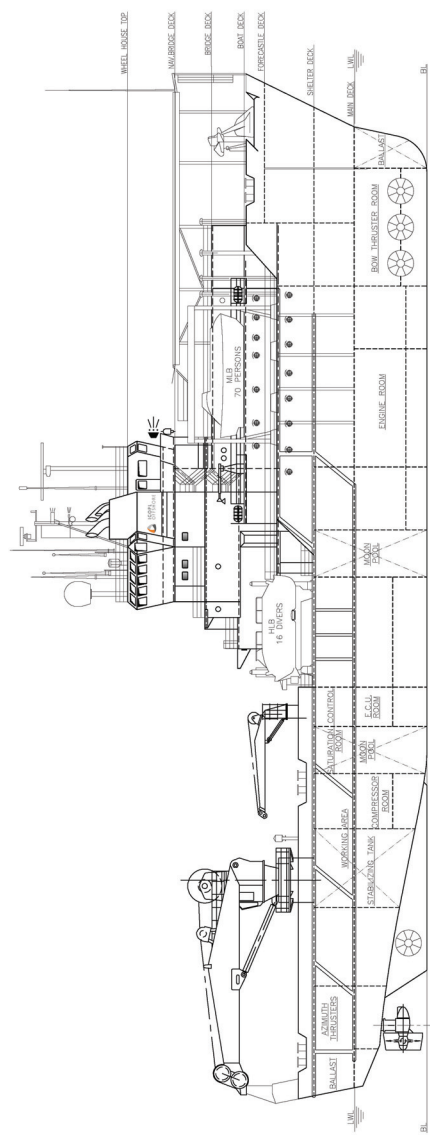
BRIDGE DECK



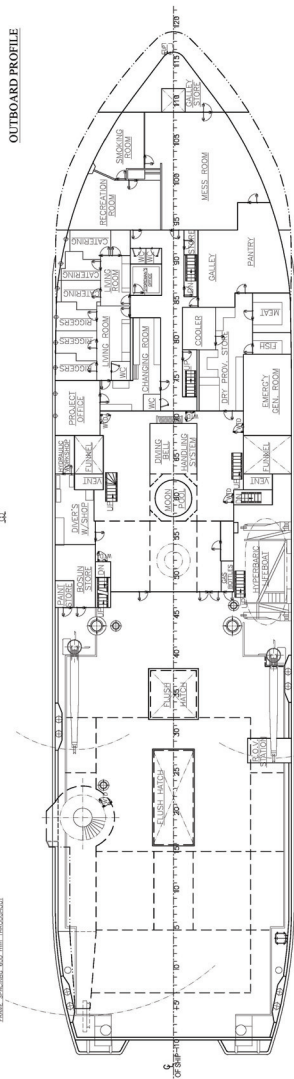
BOAT DECK



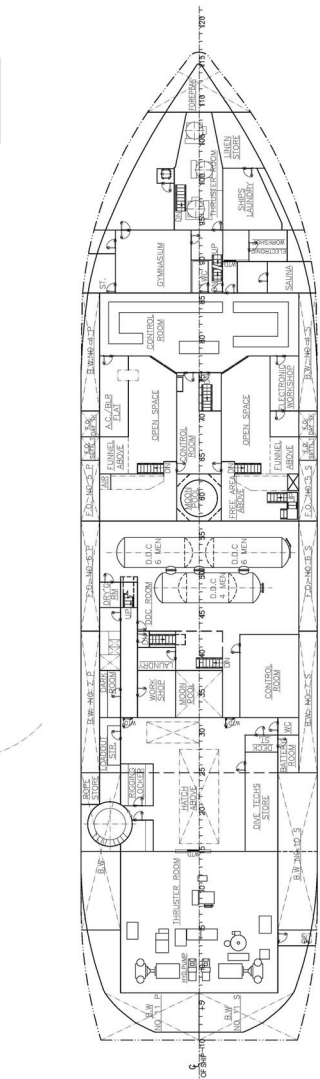
FORECASTLE DECK



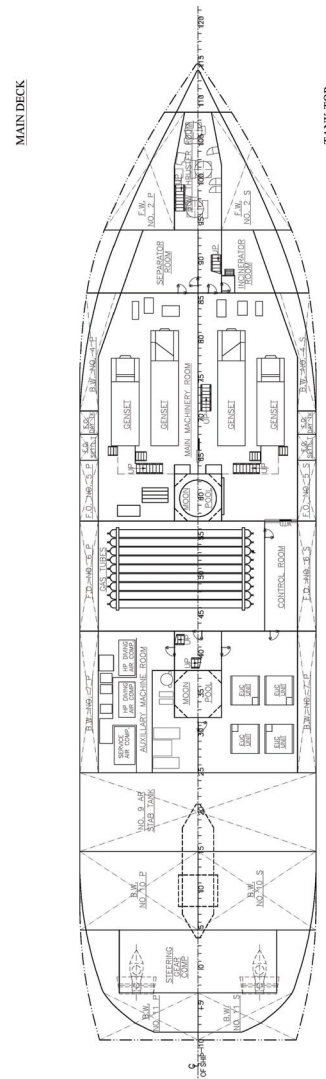
OUTBOARD PROFILE



SHELTER DECK



MAIN DECK



TANK TOP

PRINCIPAL PARTICULARS	
LENGTH	102.2 M
BREADTH	20.0 M
DEPTH	6.0 M
DISPLACEMENT	1,200 T
GROSS TONNAGE	3,700
NET TONNAGE	2,000
COMPLEMENT	31 CREW / 10 PASSENGERS
PROPULSION	2 x 1,000 HP DIESEL ENGINES
COLLISION RESISTANCE	100% COLLISION RESISTANT

Rev.	Description	Date	Drawn	Review
1	ISSUED FOR APPROVAL			

Client	IGOPL OFFSHORE PVT. LTD.	Project	SIP COMPLIANCE OPII WILCHIEF-I (Ex. DSV Alliance)
Drawn		Checked	JAMRON
Scale	1:200	Sheet	1 OF 1
Scale	1:200	Sheet	1 OF 1

Cybermarine Knowledge Systems Pvt. Ltd.
 TTC Industrial Area, Opp. Millennium Business Park,
 Mahape MIDC, Navi Mumbai 400710,
 India
 Email: info@cybermarine.com, website: www.cybermarine.net

Cybermarine

NOTES:
 1. THIS DRAWING IS THE PROPERTY OF CYBERMARINE AND IS NOT TO BE REPRODUCED OR COPIED IN WHOLE OR IN PART OR DISCLOSED TO ANY THIRD PARTY FOR ANY PURPOSE WHATSOEVER WITHOUT PRIOR WRITTEN CONSENT.

1
2
3
4
5
6
7
8
9
10
11
12
13
14
15
16

Specifications

Principle dimensions

Length overall	78.3 m
Length Between pp	69.0 m
Breadth Moulded	18.0 m
Depth Moulded	08.6 m

Operating draft

Summer draft	5.562 m
Displacement	5020 tonnes
Dead weight	1959 tonnes

Tonnage

Gross Tonnage	3700 tonnes
Net Tonnage	1110 tonnes

Cranage

Main crane port side aft:

Capacity (tested for): 70 Ton at 12 m radius
Upgradable up to 140 Ton at 7.75 m radius (with double fall)
Whip line 8 Ton at 19 m radius



Pedestal cranes stb and port (2 nos)
3 Te at 8 m radius, 1.5 Ton at 12 m



Deck space

Working moonpool
Deck load
Max overall

550 sq.m
3.6 m x 3.6 m
5 tons/sq.m
1,500 T



Accommodation

The accommodation is designed and equipped to modern European stand-ards and is fully air-conditioned with a total complement of 80 persons (38 x Single berth cabins, 21 x Double berth cabins)

DP system

Kongsberg Simrad SDP 521

Reference Systems

1 x Simrad hydroacoustic (410)
1 x Hipap hydroacoustic (500)
2 x Lightweight taut wires
2 x DGPS
1 x fan beam

Power Plant

4 x Bergen diesel engines 9,480 kW
(2x KVBG16 & 2x KVBG12)
Total generated power (12,712 HP)

Propulsion

2 x Azimuth Thrusters (Liaaen) Electric Driven: 1840 kW (each)

Thrusters- Forward

3 x Brunvoll tunnel thrusters 736kw, 11 Ton thrust (each)

Thrusters- Stern

1 x Brunvoll tunnel thrusters 736kw, 11 Ton thrust

Endurance

Fuel consumption (typical)

In port	4.0 m3 / day
Transit (Economic Speed)	17.0 m3 / day
DP approx	12~13 m3 / day
Fresh water making capacity	30 m3 / day

Capacities

Marine diesel oil	780 m3
Fresh water	670 m3
Ballast water	1718 m3

Vessel speed

Maximum speed	11.5 knots
Economic Transit Speed	10.0 knots

Diving system

Depth rating (presently CLASSED to 250 MSW)	250 MSW
No in sat	15+1 (Doctor)
No of bells	1x 3 man
Bell volume	6 m3
System volume	104.5 m3
Gas storage	11856 m3

Reclaim system fitted to chambers and bell.

SPHL Type: enclosed Davit launched, self -driven.



Helideck

Bell 212 , Super Puma, EC225type Helicopter (11.0 T)



Environmental Regulatory No.

99/99/99

Communication System

Fleet broad band with internet facility

Flag:

INDIAN

Call sign:

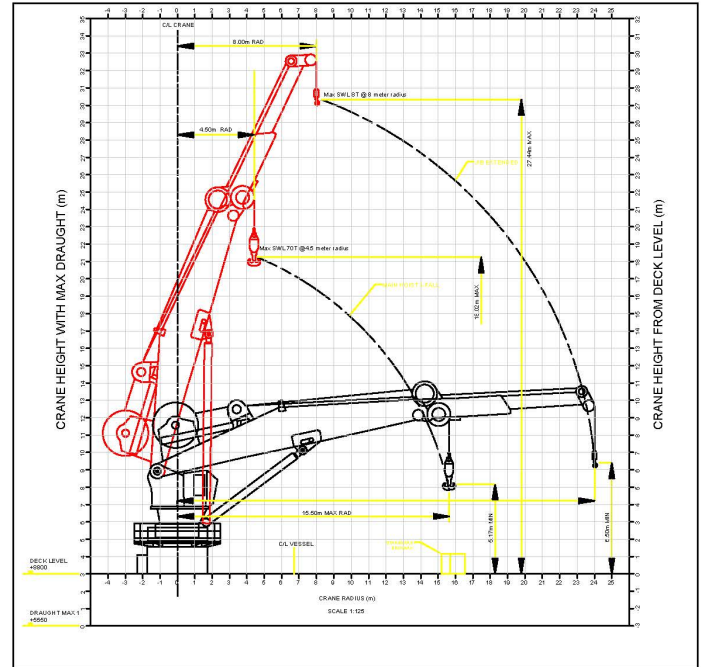
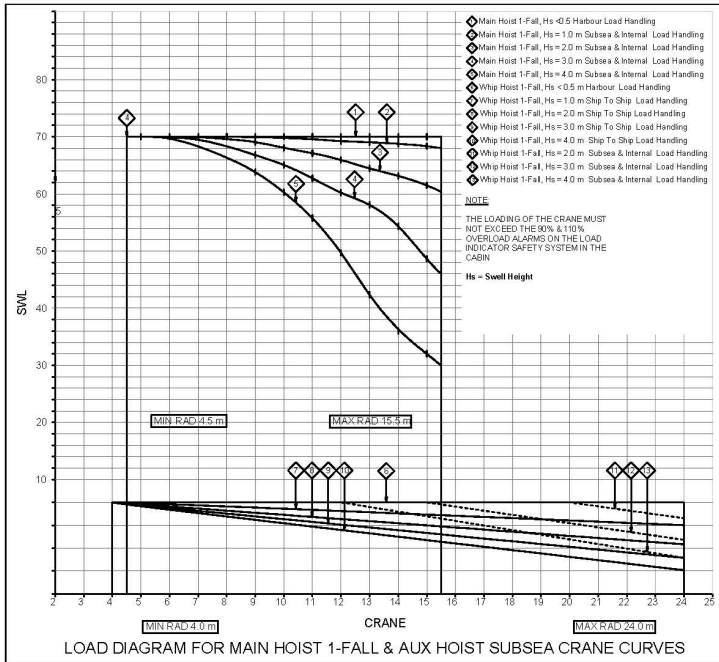
AWSF

CLASS Notation:

DNV-GL: 1A1, DSV(III), DYNPOS(AUTR), E0, HELDK, SF
IRS: SUL, JUS, HELDK, STS, IY, SYJ, DP(2)

Year built / Builder

1984 by Trosvik Mek, Verksted



**IGOPL
OFFSHORE**

IGOPL Offshore Private Limited
 Floral Deck Plaza, A-Wing, Unit Nos 603-606, Central MIDC Road,
 Opp. Seepz, Andheri (East), Mumbai - 400 093, India.
 Tel: +91-22-61204000 | Fax: +91-22-61204099 | www.igopl.com
 Email: info@igopl.com